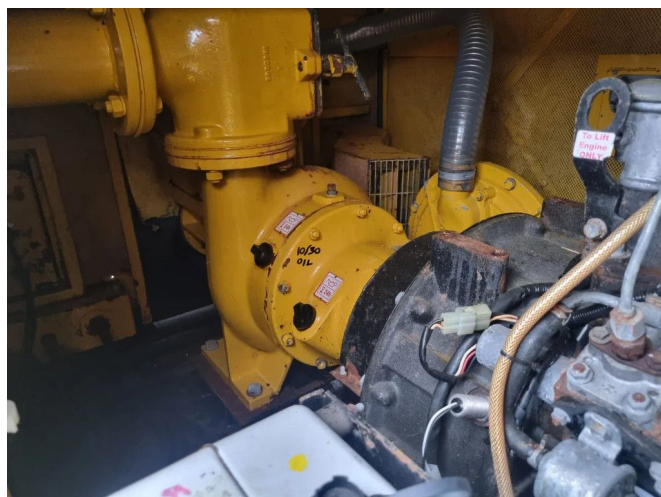


Selwood S100 with Isuzu diesel

GENERAL INFORMATION

ID	24P00129
Make	Selwood
Type	with Isuzu diesel
Year	2013
Operating hours	5.209
Construction	Water pumps
Fuel	Diesel
Weight	1.800 kg



TECHNICAL INFORMATION

- available with any desired quick coupling. • Can be used immediately • in stock! • PUMPED UP AND READY TO FLOW! • Pumping water-thin to highly viscous liquids and/or solid components • Spare parts available, usually in stock • Suitable for pumping bentonite and drilling emulsions • SUPER silent housing (SUPER quiet) • Supported by van vacuum pump

DESCRIPTION

This Selwood S100 is a leading waste water pump for applications where liquids with solid particles must be pumped. This mobile pump set is perfect for demanding (waste) water sectors.

Suitable for liquids with solid parts
Special vortex flow design
Self-priming due to integrated self-prime vacuum system

Max flow : 165 m³/h
Max head : 21 MWK
Max dirt passage : 75 mm

If your interest is aroused, please feel free to contact us. We like to help you.