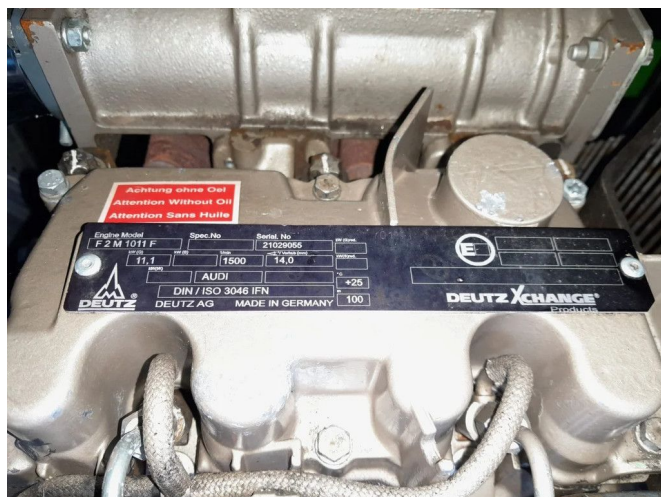


ROBOT waterpumps BW2041 (BWP22-41)

GENERAL INFORMATION

ID	24P00050
Make	ROBOT waterpumps
Year	2004
Operating hours	5.336
Construction	Wastewater pumps
Fuel	Diesel
Weight	1.500 kg
Power kw	12
Power hp	16



TECHNICAL INFORMATION

- 4" (4 inch) connection parts , Perrot/Cardan/Type C •
- available with any desired quick coupling. • Can be used immediately • Float switch (start/stop system) • in stock! • PUMPED UP AND READY TO FLOW! • Pumping water-thin to highly viscous liquids and/or solid components • self-priming (dry) • Self-priming (dry, vacuum assisted) • Spare parts available, usually in stock • Suitable for pumping sewage • Suitable for pumping surface water / construction site water • SUPER silent housing (SUPER quiet) • Supported by van vacuum pump • Unlimited dry running • Vortex/retracted pump impeller • We provide appropriate

DESCRIPTION

Damages: none

This Robot BW2041 series dry mounted dirty water pumps features a vortex impeller, which ensures good solids handling. This pump is for the application as dirty water pump or sewage pump.

In stock and immediately available

Throughput capacity: 135 m3/h
 Max dirt passage: 100 mm
 Motor brand: DEUTZ F2M 1011F
 Max. head: 25 MWK
 Max dirt passag: 1800 rpm