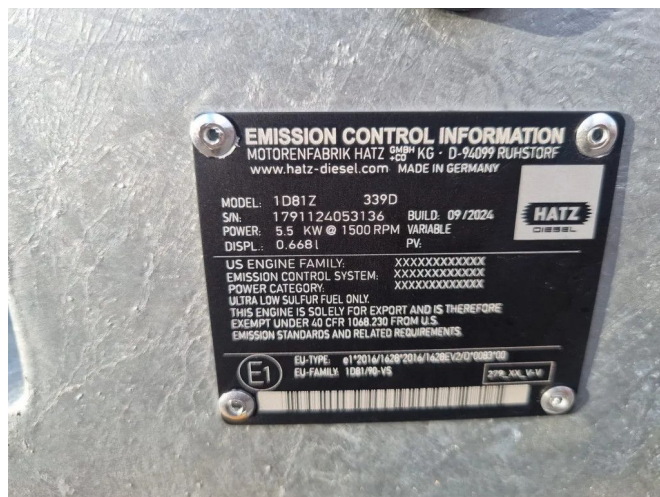


Impulse Impulse Yamuna IP-175

GENERAL INFORMATION

ID	24P00160/161
Make	Impulse
Type	IP-175
Year	2024
Construction	Water pumps
Fuel	Diesel
Weight	1.950 kg
Length	166 cm
Width	105 cm
Height	155 cm



TECHNICAL INFORMATION

- 4" (4 inch) connection parts , Perrot/Cardan/Type C •
- available with any desired quick coupling. • Can be used immediately • in stock! • NEW and UNUSED! • Only suitable for source dewatering and/or drainage • PUMPED UP AND READY TO FLOW! • sand/stone catcher • self-priming (dry) • Spare parts available, usually in stock •
- Stack frame • SUPER silent housing (SUPER quiet) •
- Unlimited dry running

DESCRIPTION

This Impulse IP-175 Yamuna piston pump is designed for vertical and horizontal dewatering. These positive displacement pumps are self-priming and extremely suitable for unlimited pumping of a mixture of water and air. Moreover, this pump can run dry without any worries, without causing damage or wear to parts.

Can be supplied with any desired coupling/connection.

MAX: 95 m3 per hour

MAX: 22 MWK

Several pieces in stock

Throughput capacity: 95 m3/h

Motor brand: Hatz