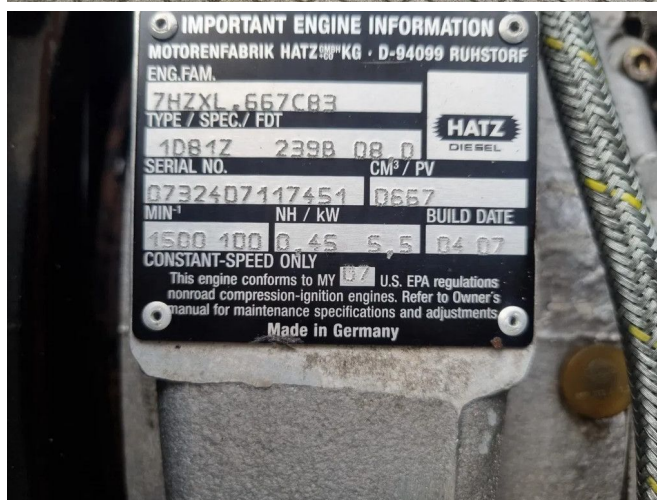


## Hidrostal 100 GG met Hatz motor 1D81Z "Betsy" Hidrostal "Betsy" Waterpomp 100GG + Hatz 1D81Z

### GENERAL INFORMATION

ID	24C00010
Make	Hidrostal
Type	Hidrostal "Betsy" Waterpomp 100GG + Hatz 1D81Z
Year	2007
Operating hours	2.075
Construction	Water pumps
Fuel	Diesel
Weight	1.200 kg
Length	220 cm
Width	105 cm
Height	149 cm



### TECHNICAL INFORMATION

- Can be used immediately • in stock! • MULTIPLE UNITS IN STOCK! • NEW and UNUSED! • PUMPED UP AND READY TO FLOW! • Screw (channel) pump impeller • Spare parts available, usually in stock • Suitable for pumping sewage • Suitable for pumping surface water / construction site water • SUPER silent housing (SUPER quiet) • Supported by van vacuum pump

### DESCRIPTION

The Hidrostal "Betsy" 100GG (popularly known as "eekels" pump) has been a great success for years! Main reason for this: \*plenty of dirt passage  
 \*pumps thick liquids with solid particles  
 \*high yield versus exceptionally low engine power  
 \*sucks in very quickly and up to a large suction height (8.5 meters) \* clogging-free, wear-resistant screw centrifugal impeller  
 \*can slop and can run dry  
 Machine can be used as:  
 \*the pumped sludge  
 \*keeping sewers and cellars dry  
 \*wherever suction and slobbering really needs to be done  
 \*emergency pump unit for fire brigade, water boards and  
 \*Water purifications  
 \*pumping surface water  
 \*keeping construction pits and construction trenches dry  
 MAX capacity: 139m<sup>3</sup>/h at 1500RPM, 172m<sup>3</sup>/h at 1800RPM  
 MAX Head: 16m<sup>wk</sup> at 1500RPM, 24m<sup>wk</sup> at 1800RPM  
 MAX dirt passage: 75mm  
 Please call or email us, we will be happy to help you.

Throughput capacity: 135 m<sup>3</sup>/h

Max dirt passage: 75 mm

Motor brand: Hatz

Max. head: 16 MWK

Max dirt passag: 1800 rpm

Weight: 1200 kg

Tweelingenlaan 111, 7324 AR Apeldoorn

Tel.: +31 (0)55 312 59 02

Email: [sales@vantongerentrading.nl](mailto:sales@vantongerentrading.nl)