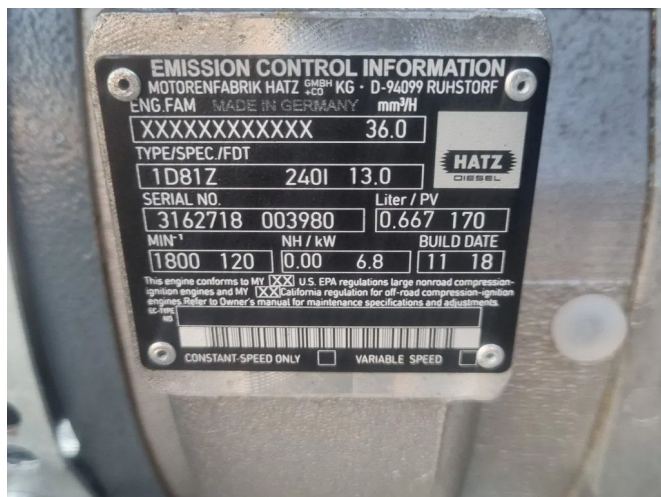


BBA BA75 D220 wit HATZ 1D81z

GENERAL INFORMATION

ID	24P00219
Make	BBA
Year	2019
Operating hours	357
Construction	Wastewater pumps
Fuel	Diesel
Weight	875 kg
Power kw	5
Power hp	7
Length	150 cm
Width	95 cm
Height	123 cm



TECHNICAL INFORMATION

- 4" (4 inch) connection parts , Perrot/Cardan/Type C •
- available with any desired quick coupling. • Can be used immediately • Float switch (start/stop system) • Ground switch • in stock! • MULTIPLE UNITS IN STOCK! • PUMPED UP AND READY TO FLOW! • Pumping water-thin to highly viscous liquids and/or solid components • self-priming (dry) • Self-priming (wet) • Spare parts available, usually in stock • Stack frame • Suitable for pumping sewage • Suitable for pumping surface water / construction site water • SUPER silent housing (SUPER quiet) • Supported by van vacuum pump • Unlimited dry running •

DESCRIPTION

The BA75 is a 3-inch mobile dirty water pump and suitable for pumping contaminated water with dirt particles up to 42 mm. The centrifugal pump is equipped with its own vacuum system and thus dry self-priming. A modern and economical diesel engine complies with current European emission legislation. The super silent casing is made for use in densely populated areas where noise level, safety and limited space are important issues

MAX capacity :100m3/h
 MAX head : 17 mwk
 Free passage : 42mm,

Throughput capacity: 100 m3/h
 Max dirt passage: 42 mm
 Max head: 17 MWK