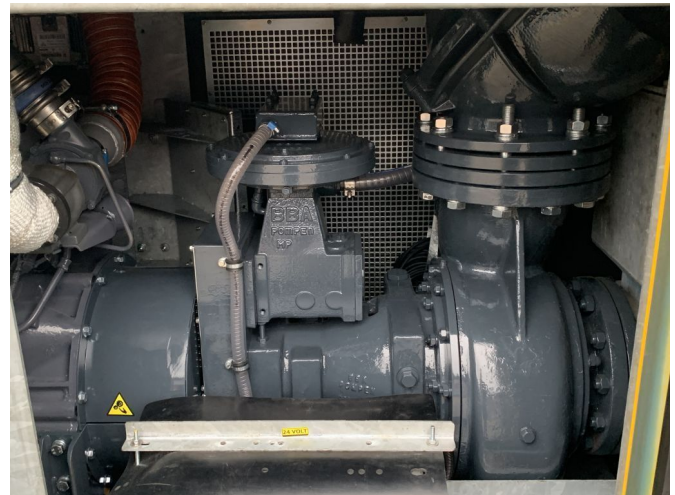


BBA BA200K D323 with Deutz TCD2012L042V

GENERAL INFORMATION

ID	21P00027
Make	BBA
Type	with Deutz TCD2012L042V
Year	2018
Operating hours	5
Construction	Water pumps
Fuel	Diesel
Weight	2.500 kg
Width	105 cm
Height	140 cm



TECHNICAL INFORMATION

- available with any desired quick coupling. • Can be used immediately • Equipped with its own operating system. (frequency and/or soft starter) "plug and plug" • Float switch (start/stop system) • in stock! • Open pump impeller
- PUMPED UP AND READY TO FLOW! • Pumping water-thin to highly viscous liquids and/or solid components • Self-priming (dry, vacuum assisted) • Spare parts available, usually in stock • Stack frame • Suitable for pumping sewage • Suitable for pumping surface water / construction site water • SUPER silent housing (SUPER quiet) • Supported by van vacuum pump

DESCRIPTION

BBA BA200K D300

- Machine is unused
- Equipped with floats for automatic switching
- Suction : DN250
- Press : DN300

MAX capacity : 640m³/h
 MAX head : 32 MWC
 MAX free passage : 105mm

for and by: sewage, dredging and shipping, rental companies, seawater, chemical industry, calamities and civil engineering.

Throughput capacity: 640 m³/h