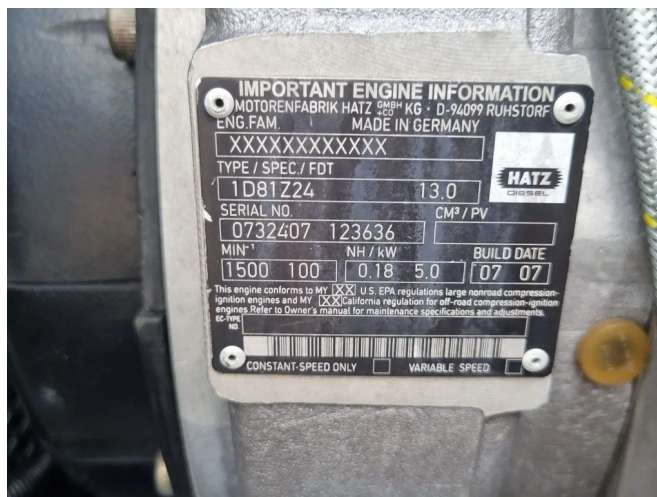


BBA BA100K D193

GENERAL INFORMATION

ID	23P00153
Make	BBA
Year	2007
Operating hours	2.475
Construction	Water pumps
Fuel	Diesel
Weight	1.300 kg
Length	227 cm
Width	100 cm
Height	145 cm



TECHNICAL INFORMATION

- 4" (4 inch) connection parts , Perrot/Cardan/Type C •
- available with any desired quick coupling. • Can be used immediately • in stock! • PUMPED UP AND READY TO FLOW! • Self-priming (dry, vacuum assisted) • Spare parts available, usually in stock • Stack frame • Suitable for pumping sewage • SUPER silent housing (SUPER quiet) • Supported by van vacuum pump • We provide appropriate documentation for the purpose of Export

DESCRIPTION

BBA BA100K D193

This diesel-driven 4" waste water pump is the best performing mobile pump set in its class. With a dirt passage of 82 mm, the chance of blockage is zero, even on the most polluted sewer jobs.

The economical 1-cylinder Hatz diesel engine with DriveOn® technology guarantees minimal fuel consumption and long maintenance intervals.

Maximum 135 m³/h and head up to 17 mwk
 Dirt passage 82 mm

Can be supplied with any desired coupling/connection.

Throughput capacity: 130 m³/h

Max dirt passage: 82 mm