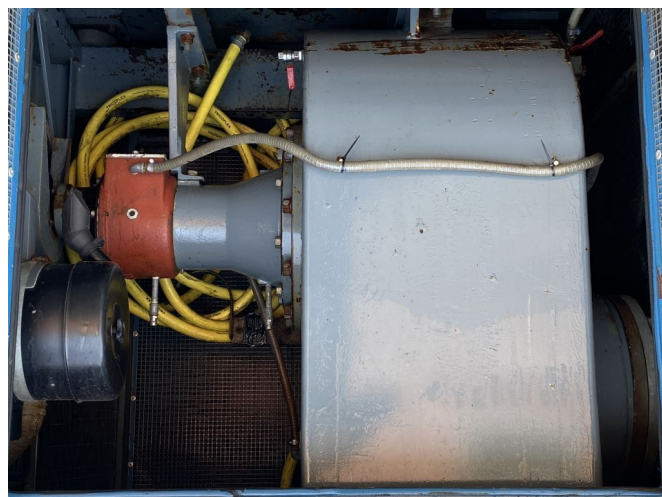


BBA B300 with Daf B300 with Deutz

GENERAL INFORMATION

ID	12C00018
Make	BBA
Type	B300 with Deutz
Year	2010
Operating hours	12.055
Construction	Water pumps
Fuel	Diesel



TECHNICAL INFORMATION

- available with any desired quick coupling.
- PUMPED UP AND READY TO FLOW!
- self-priming (dry)
- Suitable for pumping sewage
- Suitable for pumping surface water / construction site water

DESCRIPTION

Damages: none

BBA B300 is very suitable for larger work, the set is equipped with a DAF 825 diesel engine. The pump can be seen running with us. The set is built into a sound-damped enclosure. Can be supplied with any desired coupling/connection.

Max capacity : 1200 m3
Max head : 13 MWK
Max dirt passage: 70 mm

Throughput capacity: 1200 m3/h
Max dirt passage: 70 mm
Motor brand: Daf
Max dirt passage: 1000 mm